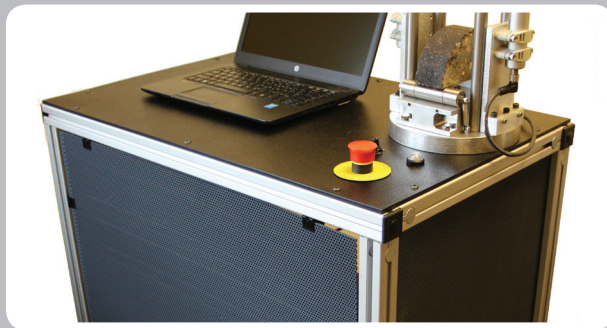
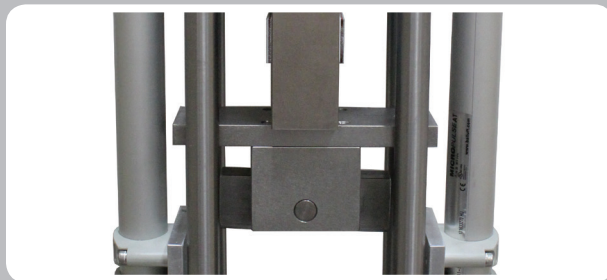


- Runs I-FIT, LSU SCB, IDEAL, TSR and more
- Multiple pricing configurations
- Precise test rate control
- TEST ADVISOR software feature for easy operation
- Stand-alone or add-on to another Testquip machine



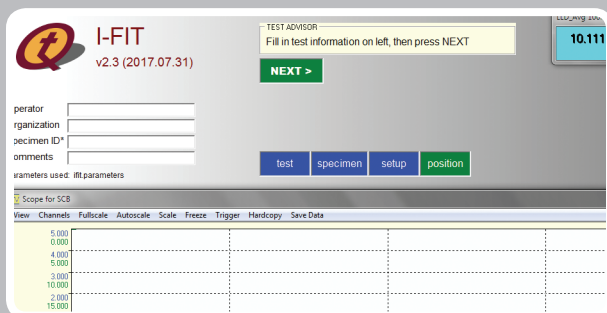
Machine Configurations

- Optional stand-alone cart provides dedicated work space and allows hassle-free portability
- Re-configurable spring rollers for running various SCB tests (I-FIT, LSU SCB, etc.)
- Standard 10,000lbf capacity for running IDEAL and TSR tests
- Low cost valve option for running monotonic tests
- High performance valve option for dynamic tests and precise load control



Load Line Displacement (LLD) Measurement

- Utilizes non-contact method of displacement measurement at the loading head – no need to worry about mounting an LVDT or crushing one by running over LVDT travel limits
- Optional patent pending LLD average measurement and control gives the highest confidence in test rate control – averages the displacement on the left and right side of the fixture



Software

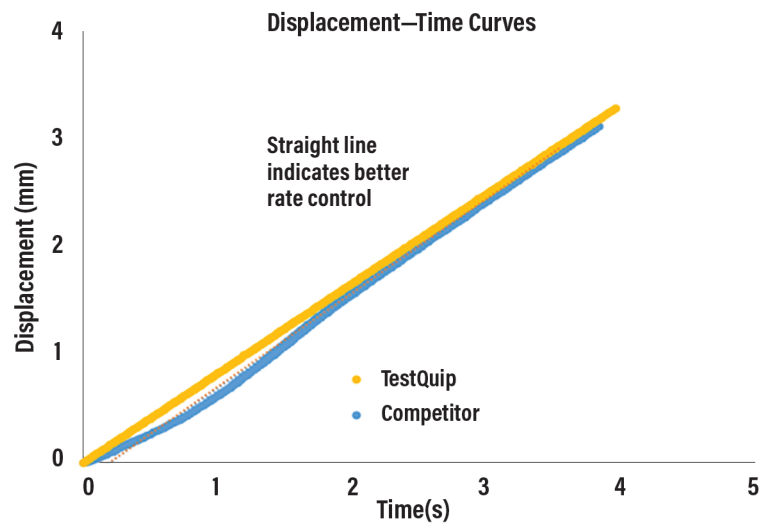
- Custom test applications pre-configured for each test standard
- TEST ADVISOR software feature guides user through the testing process
- Available with Testquip's documented I-FIT processing software for quick results without manual user input



System Performance

Precise Test Rate Control

Just like the universal machines found in top research labs, Testquip's products utilize the benefit of servo-hydraulics to achieve precise test rate control throughout the duration of the test. When testing time-dependent materials like asphalt, precise test rate control will give you better confidence that stiffness measurements are a result of the material and not the test machine.



Source: Illinois Center for Transportation, (June 2017) EVALUATION OF I-FIT RESULTS AND MACHINE VARIABILITY USING MNROAD TEST TRACK MIXTURES, p.15, FHWA-ICT-17-012

Join the other cutting edge users of Testquip equipment for designing pavements that meet cracking performance requirements in your state!



Contact Testquip for more information or references.

Testquip LLC | 9835 13th Avenue N. | Plymouth, MN 55441 | 763-600-6540 | www.testquip.com | testquip@testquip.com